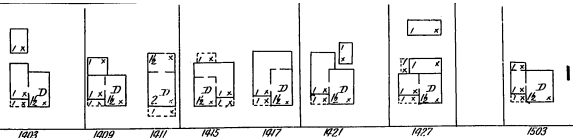


73

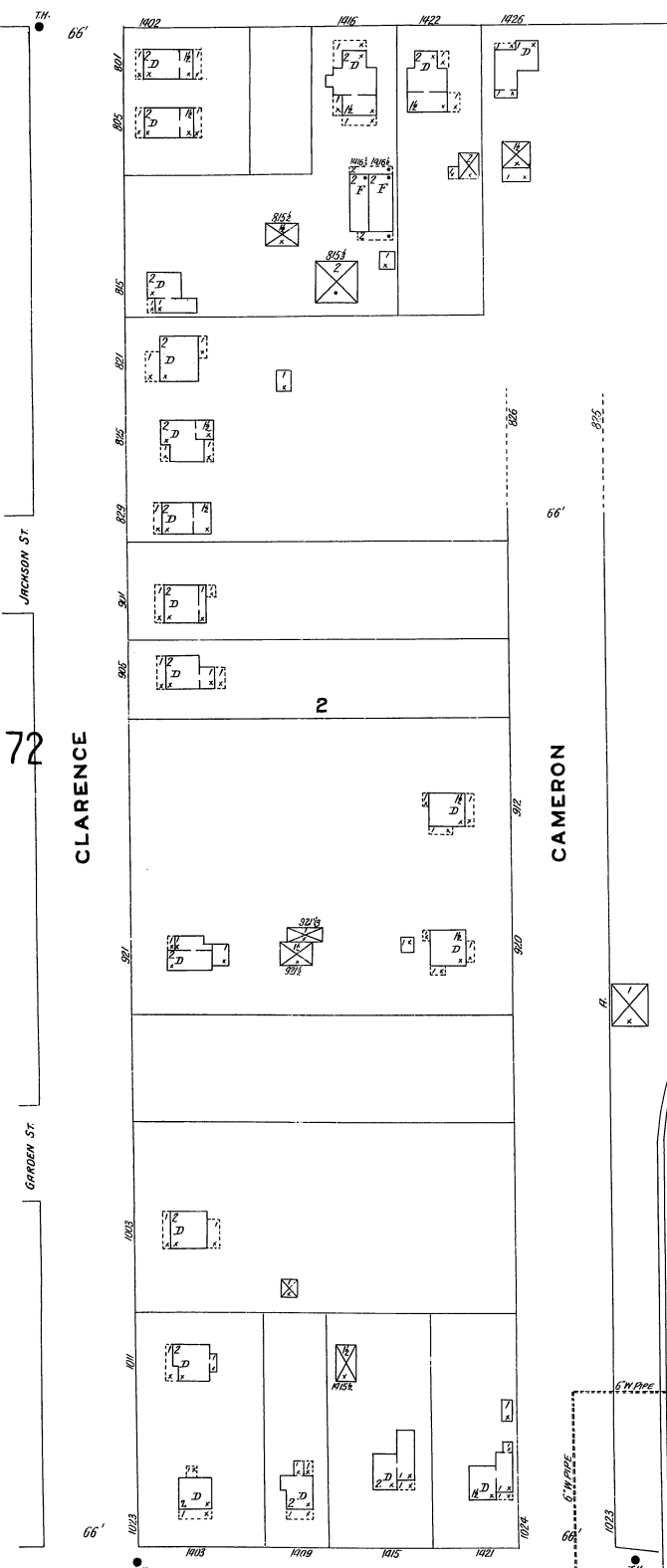
Kalamazoo Mich.

0



E. VINE

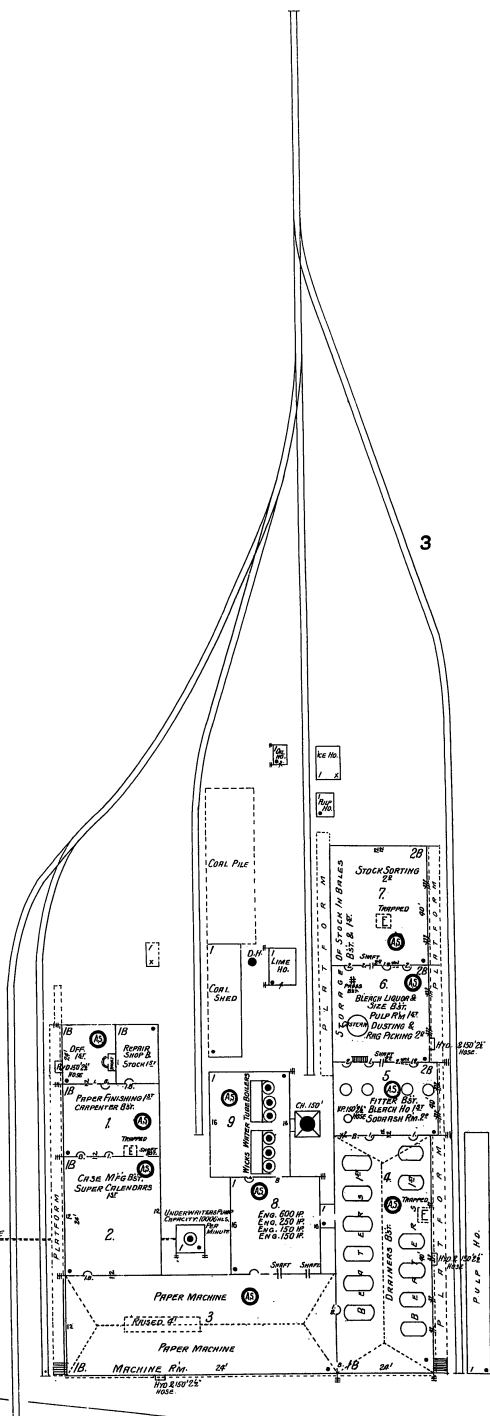
8" W. PIPE



72

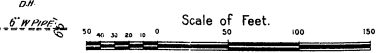
CLARENCE

CAMERON



KING PAPER CO.

NIGHT & SUNDAY WATCHMAN, R.W. TONG
 DETECTION & STOPPAGE, HENRY K. LINDA
 ONE W. U. STATION BLDG., COAL, WASH. STERN
 LEASES, ELECTRIC, OVER BOWMAN CITY CONNECTION
 MFRS. AUTOMATIC SPRINKLERS THROUGH
 NEW BUILDINGS, THE SYSTEM, LIGHTS, THE BUILDING
 & W. W. W. S. SPRINKLER, 20 BOWMAN CITY, BLDG.
 W. W. W. S. SPRINKLER, 20 BOWMAN CITY, BLDG.
 SUPPLIED BY UNDERWRITERS PUMP CO. 1100
 GIL PERMITS, 800 W. 1ST CONNECTION TO PLUM
 HEADS & EX. W. 500, 500 W. 1000 W. 200
 RISE, 100' 10" HOSE, 100' HOSE, 100' HOSE
 100' HOSE, 100' HOSE, 100' HOSE, 100' HOSE
 THE LINDA CO. HAS THE AUTOMATIC WALLS PLASTERED



74

LAKE

8" W. PIPE

0

72

